

»» **MOTORSPORT** 2008

RANGE AND DATA. Effective 1st January 2008

»» **MOTORSPORT** 2008

RANGE AND DATA. EFFECTIVE 1st JANUARY 2008



MOTORSPORT DIVISION
Dunlop Tyres Ltd
Fort Dunlop
Birmingham.
B24 9QT

tel: +44 (0) 121 306 6000

fax: +44 (0) 121 306 7000

email: motorsport@dunloptyres.com

Lit code: MOS RANGE 07 JKA 1.5

www.driversknow.co.uk



WARNING!
MOTORSPORT CAN BE
DANGEROUSLY
GOOD FUN...

CONTENTS

INTRODUCTION

THE STRENGTH OF THE BRAND 4-5

TOUCH TECHNOLOGY 6-7

TELEPHONE NUMBERS 8-9

FITMENT ADVICE 10-11

TYRE DATA

CIRCUIT 12-13

SALOON 14-15

SINGLE MARQUE 16-17

POST HISTORIC & VINTAGE 18-19

RALLY 20-21

TRACK DAY 22

KART 23

MOTORCYCLE 24-25

WORLDWIDE STOCKISTS 26-29

04 >>> THE STRENGTH OF THE BRAND

Much more than just a name,
Dunlop is an iconic brand.

Built on advanced design, uncompromised
innovation, unique development technology.

Driven by a passion for performance.
On the road as well as on the track,
Dunlop is the true driver's and rider's
brand.

Dunlop. **Drivers Know.**

Dunlop. **Riders Know.**



STREET PRESENCE



GREAT & BRITISH MINI



TOUCH TECHNOLOGY



MOTOGP



JAGUAR XK



BTCC



AUTOSPORT INTERNATIONAL

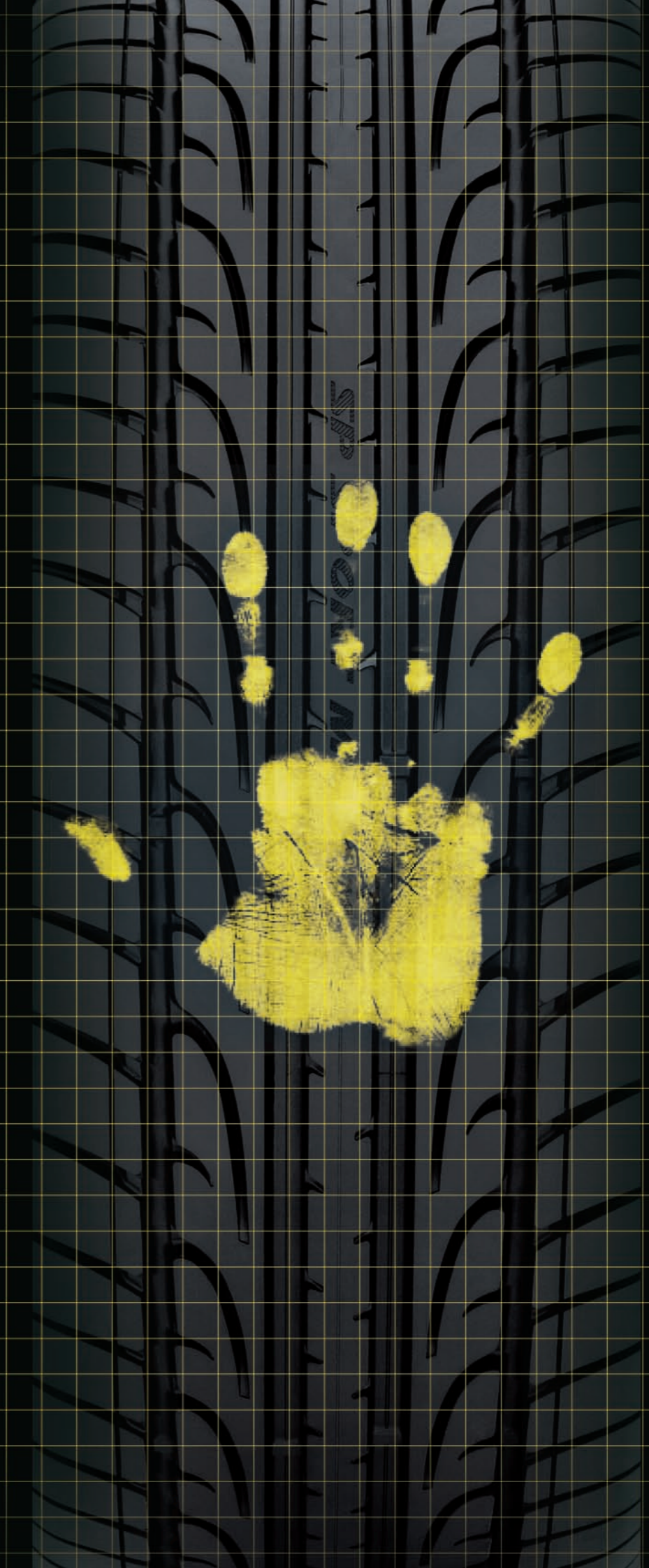
06 >>> BRINGS IT ALL TO YOUR FINGERTIPS

IN AN INSTANT, LETTING YOU **PUSH THE
PERFORMANCE BOUNDARIES**
OF BOTH CAR
& DRIVER

Dunlop Touch Technology

To drive with power, passion and precision at the sharp edge of your capabilities is a very special thing. It can't be measured in bhp, torque or power bands. It's not simply the product of clever technology and individual skill. It's a personal, emotional engagement between driver and environment: a place where you feel at one with the car and can fully trust your instincts.

And that's a question of touch. The feeling you get when every camber and twist to the road, every grain of the asphalt and every shift in suspension balance registers instantly through your fingertips.



08 **»»** MOTORSPORT TELEPHONE NUMBERS MOTORSPORT DIVISION

GENERAL MGR MOTORSPORT EU

J-F BAZELIN

EXTENSION: 7051
FAX: 7027
MOBILE NUMBER: 07881 518217

MGR M/CYCLE MOTORSPORT EU

S MALE

EXTENSION: 7028
FAX: 7027
MOBILE NUMBER: 07768 614072

SALES & PRODUCT MGR M/CYCLE EU

J DEE

EXTENSION: 7066
FAX: 7000
MOBILE NUMBER: 07831 802978

KEY ACCOUNT MGR M/CYCLE

P MEDAWAR

EXTENSION: 7074
FAX: 7000
MOBILE NUMBER: 07970 737040

MGR CAR MOTORSPORT EU

G WASSELL

EXTENSION: 7025
FAX: 7027
MOBILE NUMBER: 07768 323604

SALES & PRODUCT MGR CAR EU

M BUTLER

EXTENSION: 7059
FAX: 7000
MOBILE NUMBER: 07836 721933

KEY ACCOUNT MGR CAR EU

G SHUTER

EXTENSION: 7038
FAX: 7000
MOBILE NUMBER: 07836 518760

MANAGER UK MOTORSPORT

P PLATER

EXTENSION: 7026
FAX: 7000
MOBILE NUMBER: 07836 722108

KEY ACCOUNT MGR - CAR

P BRYANT

EXTENSION: 7031
FAX: 7000
MOBILE NUMBER: 07836 722087

KEY ACCOUNT MGR - M/CYCLE

P WALSH

EXTENSION: 7072
FAX: 7000
MOBILE NUMBER: 07879 487011

SERVICE ENGINEER - CAR EU

M MCGREGOR

EXTENSION: 7002
FAX: 7000
MOBILE NUMBER: 07786 800123

SALES ASSISTANT

M REES

EXTENSION: 7003
FAX: 7000
MOBILE NUMBER: 07854 794785

MGR - MOTORSPORT DEVELOPMENT

D WATKINS

EXTENSION: 7016
FAX: 7064
MOBILE NUMBER: 07789 397502

OPERATIONS MANAGER

A DUFFY

EXTENSION: 7004
FAX: 7000
MOBILE NUMBER: 07970 039291

TRANSPORT ENGINEER

P BAXTER

EXTENSION: 7057
FAX: 7000
MOBILE NUMBER: 07870 239383

STORES SUPERVISOR

R CATTON

EXTENSION: 7081
FAX: 7000
MOBILE NUMBER: 07775 624324



10 FITMENT ADVICE

CONDITIONS OF USE

Dunlop's motorsport tyres are specially designed and compounded for competition use only. They are not suitable for everyday road use - although a small number are designed for rally use which may include use on public roads under strictly controlled conditions. No warranty is given on Dunlop's motorsport tyres due to the conditions under which they operate.

TUBELESS MOTORSPORT TYRES

All recently designed race tyres are of tubeless construction, and should be fitted to steel or alloy wheels within correct tolerances. Cast alloy wheels should be treated to ensure they are not porous. Special bolt in valves are recommended for use with tubeless tyres.

RACE TYRE MARKINGS

Size markings, e.g. 280/675-18 show nominal tread width (mm), overall tyre diameter (mm) and bead diameter (inches). Dimensions being taken from an inflated tyre under unloaded conditions. For post historic tyres the markings e.g. 600/1200-15 are nominally section height, section width and bead diameter.

N.B. Certain rules call for maximum overall width to include rims.

FITMENT/DIRECTION OF ROTATION

All Dunlop race tyres have a compound and construction code stencil on one side of the tyre sidewall.

The recommended position of the stencil is as follows:

| CROSSPLY | | |
|----------------------|---|---------|
| FORMULA FORD | | |
| INWARD | ↑ | INWARD |
| OUTWARD | ↑ | OUTWARD |
| RWD | | |
| INWARD | ↑ | OUTWARD |
| OUTWARD | ↑ | INWARD |
| FWD | | |
| OUTWARD | ↑ | INWARD |
| INWARD | ↑ | OUTWARD |
| ARAMID e.g:D104/D105 | | |
| INWARD | | INWARD |
| INWARD | | INWARD |

| RADIAL | | |
|-----------------|---|---------------|
| NO DRIVE ARROWS | | |
| OUTWARD | | OUTWARD |
| OUTWARD | | OUTWARD |
| DRIVE ARROWS | | |
| DRIVE AXLE | - | AS ARROW |
| NON-DRIVE AXLE | - | REVERSE ARROW |

| MOTORCYCLE | | |
|------------|---|----------|
| FRONT | - | TO RIGHT |
| REAR | - | TO LEFT |

ALL TYRES MUST BE FITTED TO THE DESIGNATED WHEEL

DIAMETER ONLY:

e.g. 180/55R17 - 17" RIM ONLY

205/60R420 - 420mm (16.5") RIM ONLY

TYRE CARE

Tyres should be stored in a controlled environment with cool temperatures above 0°C and in darkness. High temperature, direct sunlight, proximity to high voltage electric motors or welding equipment should be avoided if possible. Tyre life will be improved if tyres are "scrubbed" in before using them "in anger". Tyres should be quickly and briefly brought up to operating temperature without hard acceleration, braking or cornering and cooled off again.



TYRE FITTING

Always have your tyres fitted by a competent reputable tyre dealer who understands the special requirements of competition tyre fitting, or use our service facilities at events or at our Birmingham base.

Fitting should always be carried out with extreme care to avoid damage to the bead area which is of critical importance in tubeless tyres. The use of a tyre fitting machine is strongly recommended to avoid damage to wheel or tyre.

Wheels should also be closely checked for cracks, chips and rust patches which may prevent air tight seals or be of hazard.

Tyres should not be inflated over 40 psi (2.7 bar). If the tyre does not seat deflate it, re-centre the beads, relubricate and reinflate to 40 psi. If again seating is not achieved "place assembly in a SAFETY CAGE" and slowly inflate to a MAXIMUM of 65 psi. If a problem still exists, check the wheel dimensions for accuracy. Failure to use a safety cage could, if a tyre burst or wheel failed, result in serious injury.

TYRE PRESSURES

No firm rules exist re: ideal tyre pressure - "ideal" varying with driver, car and circuit. Sufficient pressure must be used to avoid structural problems, "tuck" under or roll when cornering or turning on the rim.

Personal preference adjustment is then necessary but pressures should not be reduced significantly from those recommended without reference to Dunlop.

Pressures do vary from one category to another, e.g.

If in doubt call: car: 0121 306 7031/7059/7002

motorcycle: 0121 306 7072/7026

rally: 0121 551 2131

| INFLATION PRESSURE GUIDE | COLD | MIN. HOT RUNNING PRESSURES |
|---|-----------------------|----------------------------|
| SINGLE SEATER | F+R: 18PSI (1.2 BAR) | 24PSI (1.6 BAR) |
| SALOON CAR (FWD) | FRONT 27PSI (1.9 BAR) | 37PSI (2.5 BAR) |
| | REAR 26PSI (1.8 BAR) | 37PSI (2.5 BAR) |
| TOURING CAR (FWD) | FRONT 21PSI (1.4 BAR) | 31PSI (2.1 BAR) |
| | REAR 23PSI (1.6 BAR) | 31PSI (2.1 BAR) |
| GT/RWD TOURING CAR | F+R: 22PSI (1.5 BAR) | 31PSI (2.1 BAR) |
| PROTOTYPES: (LMP900) | 17.5PSI (1.2 BAR) | 26.5PSI (1.8 BAR) |
| | 19PSI (1.3 BAR) | 28PSI (1.9 BAR) |
| FOR BANKED TRACK PRESSURES CONTACT DUNLOP MOTORSPORT | | |

TYRE WARMING

Where allowable by regulation, all tyres should be warmed before use to minimise deflection whilst cold. Please contact Motorsport for guidance as tyres can be overwarmed.

UNSEATING

Certain tyre fitment on wide wheels rely on wheel safety devices to ensure the beads do not move inwards and cause tyre deflation under high speed running. Advice must be sought from Dunlop Motorsport Division on any fitment outside the recommended rims.



ADVICE

Always available on suitable fitments, compounds, patterns and construction suitability. Our staff are always pleased to assist and can be contacted on the numbers listed in this brochure.

FITTING SERVICE (UK ONLY)

Motorsport Division services over 100 events per season, and at each an F.O.C. fitting service is available for the DUNLOP Motorsport products, while tyres can be delivered to any of these events for you.

The right to charge is reserved for balancing, valves and special services such as grooving - and will depend on work load.

A fitting and grooving service is also available at Fort Dunlop by appointment only. Please call one of the numbers given above.

ORDERING (UK ONLY)

If you are in doubt as to which tyre you need, contact Motorsport Division for advice. Re-ordering is even simpler, just quote size, compound, construction and pattern. A next day delivery service is available at minimal extra cost. The opening of account facilities is encouraged subject to the usual credit checks, and Mastercard and Visa are both welcomed.

INFLATION PRESSURE CONVERSION:

PSI to BAR: divide by 14.5

BAR to PSI: multiply by 14.5

12 >>> CIRCUIT

A comprehensive range of track applications, cross ply and radial, from 10" to 19" diameters, from Le Mans to Mallory Park

| size | overall width category | | | design rim width inch | diameter | | overall width | | tread width | | CONTACT DUNLOP FOR ROLLING DIMENSIONS |
|---|------------------------|------------|------|-----------------------|----------|------|---------------|------|-------------|------|---------------------------------------|
| | F=front 12" | R=rear 14" | 16" | | mm | inch | mm | inch | mm | inch | |
| GT & SPORTSCAR - SPECIAL ORDERS ONLY | | | | | | | | | | | |
| 210/640R18F | 7.5-9 | | | 8 | 640 | 25.2 | 223 | 8.8 | 203 | 8 | |
| 235/640R18F | 8.5-10 | | | 9 | 640 | 25.2 | 248 | 9.8 | 228 | 9 | |
| 250/640R18F | 9-10.5 | | | 9.5 | 640 | 25.2 | 257 | 10.1 | 240 | 9.5 | |
| 260/640R18F | 9.5 - 11 | | | 10 | 641 | 25.2 | 270 | 10.6 | 252 | 9.9 | |
| 285/650R18F | 10.5-11F | 11-12 | | 11.5 | 644 | 25.4 | 306 | 12.0 | 284 | 11.2 | |
| 300/650R18 | F 11.5 - 12.5 | | | 12 | 645 | 25.4 | 320 | 12.6 | 301 | 11.9 | |
| 265/660R18F | 10-11 | | | 10 | 655 | 25.9 | 278 | 10.9 | 252 | 9.9 | |
| 280/660R18F | 10.5-11F | 11-12 | | 11 | 658 | 25.9 | 304 | 12 | 274 | 10.8 | |
| 285/660R18 | F 10.5 -11.5 | | | 11 | 655 | 25.8 | 301 | 11.9 | 277 | 10.9 | |
| 300/660R18 | F+R 12-12.5 | | | 12.5 | 656 | 25.8 | 321 | 12.6 | 290 | 11.4 | |
| 340/660R18 | | F 13-14 | | 13.5 | 656 | 25.9 | 355 | 14 | 324 | 12.8 | |
| 285/680R18R | 10.5-11 | | | 11 | 679 | 26.7 | 302 | 11.9 | 270 | 10.6 | |
| 290/680R18R | 10.5-11 | | | 11 | 680 | 26.8 | 302 | 11.9 | 281 | 11.1 | |
| 270/710R18R | 10.5-11 | | | 11 | 708 | 27.9 | 299 | 11.8 | 258 | 10.2 | |
| 310/710R18 | R 12.5-13 | | | 13 | 711 | 28 | 354 | 13.9 | 305 | 12 | |
| 315/690R18 | R 12.5-13 | | | 13 | 691 | 27.2 | 351 | 13.8 | 307.5 | 12.1 | |
| 360/710R18 | | R 14.5-15 | 14.5 | tba | tba | tba | tba | tba | tba | tba | |
| 360/725R18 | | R 14.5-15 | 14.5 | 720 | 28.3 | 402 | 15.8 | 360 | 14.2 | | |

The above table indicates popular fitments. Please refer to Dunlop Motorsport for fitments not included.

'Best' fitment is usually the widest specified wheel.

| size | construction | pattern | permitted optimum rim width | rim width | diameter | overall width | tread width | revs per mile | | | |
|--|--------------|---------|-----------------------------|-----------|----------|---------------|-------------|---------------|------|-----|-----|
| SINGLE SEATER - SPECIAL ORDERS ONLY | | | | | | | | | | | |
| 140/535R13S04/S04W | SLICK/WET | | 5.5 | 7.05 | 535 | 21.1 | 169 | 6.7 | 957 | | |
| 160/535R13S04/S04W | SLICK/WET | | 6.0 | 8.06 | 537 | 21.1 | 189 | 7.4 | 826 | | |
| 175/535R13S95/S95W | SLICK/WET | | 6.0 | 8.07 | 539 | 21.2 | 206 | 8.1 | 950 | | |
| 190/535R13S04/S04W | SLICK/WET | | 7.5 | 9.58 | 541 | 21.3 | 221 | 8.7 | 946 | | |
| 170/575R13S95/S95W | SLICK/WET | | 5.5 | 7.05 | 571 | 22.5 | 209 | 8.2 | 882 | | |
| 205/570R13S95/S95W | SLICK/WET | | 8.0 | 9.59 | 574 | 22.6 | 255 | 10 | 892 | | |
| 230/570R13S04/S04W | SLICK/WET | | 9.5 | 10.5 | 10 | 575 | 22.6 | 280 | 11.2 | 235 | 9.2 |
| 890 | | | | | | | | | | | |
| 230/535R13S04/S04W | SLICK/WET | | 9.5 | 10.5 | 10 | 541 | 21.3 | 262 | 10.3 | 231 | 9.1 |

| size | construction | pattern | permitted rim width inch | optimum rim width inch | diameter m m inch | overall width m m inch | tread width m m inch | revs per mile @ 100mph | | | |
|----------------------|--------------|---------|--------------------------|------------------------|-------------------|------------------------|----------------------|------------------------|-----|------|------|
| MISCELLANEOUS | | | | | | | | | | | |
| 160/490-10D15 /D42 | SLICK/WET | | 5.0-7.0 | 6 | 480 | 18.9 | 214 | 8.4 | 150 | 5.9 | 1067 |
| 180/490-10*D15 /D42 | SLICK/WET | | 6.0-8.0 | 7 | 485 | 19.1 | 230 | 9 | 170 | 6.7 | 1067 |
| 170/510-13CLUBMANS | SLICK/WET | | 7.0-9.0 | 8 | 516 | 20.3 | 222 | 8.7 | 165 | 6.5 | 992 |
| 210/570-13CLUBMANS | SLICK/WET | | 7.0-11.0 | 10 | 564 | 22.2 | 283 | 11.1 | 210 | 8.3 | 908 |
| 160/490-13*D104 | SLICK/WET | | 4.5-7.5 | 6 | 492 | 19.4 | 188 | 7.4 | 156 | 6.1 | 1041 |
| 180/490-13*D104 | SLICK/WET | | 5.5-8.0 | 8 | 497 | 19.6 | 222 | 8.7 | 179 | 7.1 | 1030 |
| 215/525-13*D104 | SLICK | | 9.0-11.0 | 10 | 525 | 20.7 | 270 | 10.6 | 215 | 8.5 | 975 |
| 240/525-13*D104 | SLICK | | 10.0-12.0 | 11 | 531 | 20.9 | 274 | 10.8 | 234 | 9.2 | 967 |
| 210/600-16*D104A | SLICK | | 7.5-9.5 | 8.5 | 600 | 23.6 | 255 | 10 | 215 | 8.5 | 854 |
| 275/600-16*D104 | SLICK/WET | | 9.0-12.0 | 10 | 610 | 24 | 319 | 12.6 | 284 | 11.2 | 839 |
| 290/600-16*D104 | SLICK/WET | | 10.5-12.5 | 12 | 599 | 23.6 | 328 | 12.9 | 285 | 11.2 | 855 |
| 305/600-13*D104 | SLICK | | 12.5-14.0 | 13.5 | 607 | 23.9 | 402 | 15.8 | 305 | 12 | 845 |
| 310/625-16*D104 | SLICK/WET | | 11.0-14.0 | 12 | 620 | 24.4 | 343 | 13.5 | 310 | 12.2 | 826 |
| 350/650-16*D104 | SLICK | | 14.0-15.0 | 15 | 648 | 25.5 | 408 | 16.1 | 354 | 13.9 | 791 |
| 140/535R13*S06 | CR301 | | 5.5-7.0 | 5.5 | 535 | 21.1 | 169 | 6.7 | 140 | 5.5 | 957 |
| 160/535R13*S06 | CR301 | | 6.0-8.0 | 6.5 | 537 | 21.1 | 189 | 7.4 | 160 | 6.3 | 826 |
| 170/575R13*S06 | CR298 | | 5.5-7.0 | 5.5 | 571 | 22.5 | 209 | 8.2 | 170 | 6.7 | 882 |

*special orders only



Correct tyre selection, fitment and maintenance is essential for safety.

Dunlop policy is one of continuing development.

Consequently they reserve the right to change or amend specifications without prior notice.

14 >>> SALOON

Dunlop supports all levels of club and national saloon car racing including the UK's premier televised saloon car championship BTCC plus Brit Car and Great & British.

| size | construction | pattern | permitted optimum | | diameter | overall width | | tread width | | revs per mile @ 100mph | |
|---|--------------|---------|-------------------|----------------|----------|---------------|------|-------------|------|------------------------|------|
| | | | rim width inch | rim width inch | | m | inch | m | inch | | m |
| SALOON CAR - RADIAL INCLUDING GROUP N | | | | | | | | | | | |
| 165/505R13A8D/A8WSLICK/WET5.0-7.0 | | | 6 | | 506 | 19.9 | 179 | 7 | 160 | 6.3 | 1012 |
| 175/555R14A46D/A22WSLICK/WET5.5-7.5 | | | 6 | | 557 | 22 | 194 | 7.6 | 175 | 6.9 | 919 |
| 175/555R15A46D/A22WSLICK/WET5.5-7.5 | | | 7 | | 559 | 22 | 191 | 7.5 | 173 | 6.8 | 916 |
| 185/555R15A46D/A22WSLICK/WET6.0-8.0 | | | 7.5 | | 559 | 22 | 204 | 8 | 186 | 7.3 | 916 |
| 185/580R15A46D/A22WSLICK/WET6.5-7.5 | | | 7 | | 583 | 23 | 205 | 8.1 | 185 | 7.3 | 878 |
| 200/580R15A46D/A22WSLICK/WET6.5-8.5 | | | 7.5 | | 583 | 23 | 216 | 8.5 | 195 | 7.7 | 878 |
| 200/580R16A46D/A22WSLICK/WET6.5-8.5 | | | 7.5 | | 583 | 23 | 216 | 8.5 | 195 | 7.7 | 878 |
| 210/605R16A46D/A22WSLICK/WET6.5-8.5 | | | 8 | | 607 | 23.9 | 223 | 8.8 | 212 | 8.3 | 842 |
| 235/605R16A46D/A22WSLICK/WET8.0-9.5 | | | 8 | | 608 | 23.9 | 239 | 9.4 | 233 | 9.2 | 842 |
| 265/630R16A46D/A22WSLICK/WET9.5-10.5 | | | 10 | | 633 | 24.9 | 278 | 10.9 | 260 | 10.2 | 809 |
| OTHER GT (NOT CATEGORY SPECIFIC) - SPECIAL ORDERS ONLY | | | | | | | | | | | |
| 205/620R17 | | | 7.0-9.0 | 7.5 | 616 | 24.3 | 215 | 8.5 | 203 | 8 | 822 |
| 210/620R17 | | | 7.0-9.0 | 8 | 620 | 24.4 | 223 | 8.8 | 210 | 8.3 | 826 |
| 235/620R17 | | | 8.5-9.5 | 9 | 620 | 24.4 | 248 | 9.8 | 235 | 9.3 | 826 |
| 265/630R17 | | | 9.5-10.5 | 10 | 636 | 25 | 280 | 11 | 260 | 10.2 | 805 |
| 290/645R17 | | | 12.0-13.0 | 12 | 642 | 25.3 | 328 | 12.9 | 286 | 11.3 | 794 |
| 305/630R17 | | | 12-13.5 | 13 | 629 | 24.8 | 340 | 13.4 | 300 | 11.8 | 815 |
| 210/650R18 | | | 8.0-9.0 | 8.2 | 649 | 25.6 | 227 | 8.9 | 210 | 8.3 | 789 |
| 210/645R19 | | | | 8 | 642 | 25.3 | 225 | 9.9 | 210 | 8.3 | 794 |
| 285/680R19 | | | | 10.5 | 680 | 26.8 | 293 | 11.5 | 270 | 10.6 | 674 |
| TOURING CAR | | | | | | | | | | | |
| 235/610R17C68D /A46DSLICK/WET8.5-9.5 | | | 9 | | 608 | 23.9 | 245 | 9.7 | 226 | 8.9 | 855 |
| 212/650R19B52D /B52WSLICK/WET7.5-8.5 | | | 8.2 | | 646 | 25.4 | 227 | 8.9 | 210 | 8.3 | 789 |

NB. All sizes are NOT made in all compounds - please refer to the Motorsport Division for the actual compounds.

| size | construction | pattern | permitted optimum | | diameter | overall width | | tread width | | revs per mile @ 100mph | |
|--|--------------|---------|-------------------|----------------|----------|---------------|------|-------------|------|------------------------|------|
| | | | rim width inch | rim width inch | | m | inch | m | inch | | m |
| SALOON CAR - CROSSPLY INCLUDING GROUP N | | | | | | | | | | | |
| 160/490-13 D105 | | SLICK | 4.5-7.5 | 6 | 492 | 19.4 | 188 | 7.4 | 156 | 6.1 | 1041 |
| 180/490-13 D105 | | SLICK | 5.5-8.0 | 8 | 497 | 19.6 | 222 | 8.7 | 179 | 7.1 | 1030 |
| 165/525-14 D106A | | SLICK | 5.0-6.0 | 5.5 | 513 | 20.2 | 186 | 7.3 | 165 | 6.5 | 998 |
| 175/525-14 D106A | | SLICK | 6.0-7.0 | 6.5 | 513 | 20.2 | 198 | 7.8 | 180 | 7.1 | 997 |
| 165/555-14 D105 | | SLICK | 5.5-7.0 | 6 | 552 | 21.7 | 189 | 7.5 | 168 | 6.6 | 927 |
| 185/555-14 D105 | | SLICK | 5.5-8.0 | 7 | 557 | 21.9 | 193 | 7.6 | 186 | 7.3 | 921 |
| 175/555-15 D104 | | SLICK | 5.5-6.5 | 5.5 | 560 | 22.1 | 180 | 7.1 | 175 | 6.9 | 914 |
| 185/555-15 D104 | | SLICK | 6.0-7.0 | 6 | 560 | 22.1 | 190 | 7.5 | 185 | 7.3 | 914 |
| 205/555-15 D104 | | SLICK | 7.0-8.0 | 7 | 550 | 21.7 | 212 | 8.4 | 204 | 8 | 931 |
| 195/565-15 D105 | | SLICK | 6.0-6.5 | 6 | 564 | 22.2 | 202 | 8 | 194 | 7.6 | 908 |
| 175/570-15 D104 | | SLICK | 5.5-7.5 | 6.5 | 570 | 22.4 | 203 | 8 | 172 | 6.8 | 899 |
| 185/570-15 D105 | | SLICK | 6.0-8.0 | 7 | 570 | 22.4 | 211 | 8.3 | 182 | 7.2 | 899 |
| 200/580-15 D105 | | SLICK | 6.0-8.0 | 7 | 580 | 22.8 | 213 | 8.4 | 194 | 7.6 | 883 |
| 225/580-15 D105 | | SLICK | 7.0-9.0 | 8 | 580 | 22.8 | 238 | 9.4 | 219 | 8.6 | 883 |
| 205/580-16 D105 | | SLICK | 6.0-8.0 | 7 | 580 | 22.8 | 215 | 8.5 | 205 | 8 | 879 |
| 225/580-16 D105 | | SLICK | 7.0-9.0 | 8 | 583 | 22.9 | 241 | 9.5 | 225 | 8.9 | 879 |
| 200/600-16 D104A | | SLICK | 7.0-9.0 | 8 | 595 | 23.4 | 242 | 9.5 | 200 | 7.8 | 872 |
| 200/605-17 D104 | | SLICK | 6.0-8.0 | 7 | 607 | 23.9 | 211 | 8.3 | 194 | 7.6 | 845 |
| 225/605-17 D104 | | SLICK | 7.0-9.0 | 8 | 609 | 24 | 230 | 9.1 | 220 | 8.7 | 844 |
| 240/605-17 D104 | | SLICK | 8.0-9.5 | 8.5 | 610 | 24 | 251 | 9.9 | 230 | 9.1 | 839 |



WET



SLICK



Correct tyre selection, fitment and maintenance is essential for safety.
Dunlop policy is one of continuing development.
Consequently they reserve the right to change or amend specifications without prior notice.

16 >>> SINGLE MARQUE

A range of highly developed track tyres for use in one make championships where grip and consistency is paramount.

| size mile | construction | pattern | permitted optimum | | diameter | overall | | tread | | revs per @ |
|---|--------------|-----------|-------------------|-------------------|--------------|-------------|-------------|-------------|-------------|------------------|
| | | | rim width inch | rim width inch | | width mm | width mm | width mm | width mm | |
| BRITISH TOURING CAR CHAMPIOSHIP | | | | | | | | | | |
| 235/610R17 | | C63D | SLICK | 8.5 - 9.5 | 9 608 | 23.9 245 | 9.7 226 | 8.9 | 855 | |
| 235/610R17 | | A46D | WET | 8.5 - 9.5 | 9 608 | 23.9 245 | 9.7 226 | 8.9 | 855 | |
| F VW (GERMANY)/F3/RADICAL ENDURANCE/F RUSSIA/SPANISH F3 | | | | | | | | | | |
| 190/535R13 | | SO4/S04W | SLICK/WET | 7.5 - 9.5 | 8 541 | 21.3 221 | 8.7 190 | 7.4 | 946 | |
| 230/570R13 | | SO4/S04W | SLICK/WET | 9.5 - 10.5 | 10 | 575 22.6 | 280 11.2 | 235 | 9.2 | 890 |
| MINI CHALLENGE | | | | | | | | | | |
| 200/580 R16 | | A46D/A22W | SLICK/WET | SEE | SALOON | | | | | |
| CLUB | | | | | | | | | | |
| 195/55 15 DZ02G | | DRY | SEE ROAD | LEGAL | | | | | | |
| 185/580 R15 | | A22W | WET | SEE | SALOON | | | | | |
| MINI 7 | | | | | | | | | | |
| 500L 10 | | CR70/CR65 | DRY/WET | 3.5 - 5.5 | 4.5 498 19.6 | 165 6.5 | 120 4.7 | 1029 | | |
| MINI MIGLIA | | | | | | | | | | |
| 160/490-10 | | D15/ D42 | SLICK/WET | 5.0 - 7.0 | 6 480 | 18.9 214 | 8.4 150 | 5.9 | 1067 | |
| FORMULA VEE | | | | | | | | | | |
| 120/590-15 | | D22A | CR82 | 4.0 - 5.5 | 4.5 579 | 22.8 161 | 6.3 120 | 4.7 | 884 | |
| 135/620-15 | | D22A | CR82 | 4.0 - 6.0 | 4.5 617 | 24.3 190 | 7.5 138 | 5.4 | 830 | |
| BRSCC FORD Si | | | | | | | | | | |
| 175/555R14 | | A46D/A8W | SLICK/WET | 5.5 - 7.5 | 6.5 557 | 22 194 | 7.6 175 | 6.9 | 919 | |
| 175/555R15 | | A46D/A8W | SLICK/WET | 5.5 - 7.5 | 7 559 | 22 191 | 7.5 173 | 6.8 | 916 | |
| UK - GINETTA/FORD SALOONS - CONTACT DUNLOP FOR DETAILS | | | | | | | | | | |
| SALOON 2000 - HOLLAND/BELGIUM/BALTIC STATES/RUSSIA/NEW ZEALAND | | | | | | | | | | |
| 200/580R15 | | A46D/A8W | SLICK/WET | 6.5 - 8.5 | 7.5 583 | 23 216 | 8.5 195 | 7.7 | 878 | |
| TOURING CAR - DENMARK/FINLAND/GERMANY | | | | | | | | | | |
| 235/610R17 | | | SLICK/WET | 8.5 - 9.5 | 9 608 | 23.9 245 | 9.7 226 | 8.9 | 855 | |
| 212/650R19 | | B52D/W | SLICK/WET | 7.5 - 9.5 | 8.2 646 | 25.4 227 | 8.9 210 | 8.3 | 789 | |
| RADICAL/PROSPORT/SR3/SR4/SR8 (SR3 & SR8 RADICAL CUP GERMANY) | | | | | | | | | | |
| 190/535R13 | | | SLICK/WET | 7.5 - 9.5 | 8 541 | 21.3 221 | 8.7 190 | 7.4 | 946 | |
| 230/570R13 | | | SLICK/WET | 9.5 - 10.5 | 10 | 575 22.6 | 280 11.2 | 235 | 9.2 | 890 |

| size | construction | pattern | permitted optimum | | diameter | overall | | tread | | revs per mile @ 100mph |
|---|--------------|-----------|-------------------|-------------------|----------|-------------|-------------|-------------|-------------|---------------------------------|
| | | | rim width inch | rim width inch | | width mm | width mm | width mm | width mm | |
| SPANISH GT SEE UNDER GT AND SPORTSCAR | | | | | | | | | | |
| POLO CUP - GERMANY | | | | | | | | | | |
| 200/605-17 | D104 | SLICK | 6.0-8.0 | 7 | 607 23.9 | 211 8.3 | 194 7.6 | 845 | | |
| 205/620R17 | | WET | 7.0-9.0 | 7.5 | 616 24.3 | 215 8.5 | 203 8 | 822 | | |
| FORD FIESTA CUP - GERMANY | | | | | | | | | | |
| 185/580R15 | | SLICK/WET | 6.0 - 8.0 | 7 | 583 23 | 205 8.1 | 185 7.3 | 879 | | |
| SUPER COUPE | | | | | | | | | | |
| VW POLO G40 | | | | | | | | | | |
| 160/490-13 | D15 | SLICK | 4.5 - 7.5 | 6 | 492 19.4 | 188 7.4 | 156 6.1 | 1041 | | |
| 165/505R13 | A8W | WET | 5.0 - 7.0 | 6 | 506 19.9 | 179 7 | 160 6.03 | 1012 | | |
| HONDA CRX | | | | | | | | | | |
| 175/555R14A46D/A8W | | SLICK/WET | 5.5 - 7.5 | 6.5 | 557 22 | 194 7.6 | 175 6.9 | 919 | | |
| ROVER 216 GTI | | | | | | | | | | |
| 175/570-15 | D105 | SLICK | 5.5 - 7.5 | 6 | 570 22.4 | 203 8 | 172 6.8 | 899 | | |
| 175/555R15 | A8W | WET | 5.0 - 7.0 | 6.5 | 559 22 | 191 7.5 | 173 6.8 | 916 | | |
| RENAULT CLIO CUP/MINI CHALLENGE EUROPE | | | | | | | | | | |
| 205/620 R17A46D | | SLICK/WET | 7.0 - 9.0 | 7.5 | 616 24.3 | 215 8.5 | 203 8 | 822 | | |
| ROVER TURBO & VW VENTO | | | | | | | | | | |
| 210/605R16A46D/A22W | | SLICK/WET | 7.0 - 8.5 | 7 | 607 23.9 | 216 8.5 | 212 8.3 | 844 | | |
| VAUXHALL VECTRA | | | | | | | | | | |
| 210/620R17A46D/A22W | | SLICK/WET | 7.0 - 9.0 | 8 | 620 24.4 | 223 8.8 | 210 8.3 | 826 | | |
| PROTON | | | | | | | | | | |
| 200/580R15 A46D | | SLICK/WET | 6.5 - 8.5 | 7.5 | 583 23 | 216 8.5 | 195 7.7 | 878 | | |
| HISTORIC FORMULA FORD / RACE SCHOOL | | | | | | | | | | |
| 135/545-13 | D22A | CR82 | 5.0 - 6.0 | 5.5 | 550 21.7 | 190 7.5 | 135 5.3 | 935 | | |
| 165/580-13 | D53 | CR82 | 5.0 - 6.0 | 5.5 | 585 23 | 220 8.3 | 165 6.5 | 883 | | |



Correct tyre selection, fitment and maintenance is essential for safety.

Dunlop policy is one of continuing development.

Consequently they reserve the right to change or amend specifications without prior notice.

18 POST HISTORIC & VINTAGE

Dunlop 'original equipment' available for a wide range of race cars. Totally authentic specifications take your car back to its heyday.

| size | pattern | permitted optimum | | diameter | | overall width | | tread width | | revs per mile @ 100mph |
|--|-----------|-------------------|----------------|----------|------|---------------|------|-------------|------|------------------------|
| | | rim width inch | rim width inch | m m | inch | m m | inch | m m | inch | |
| 'L' SECTION (TUBES AVAILABLE FOR ALL BAR 500L 10) | | | | | | | | | | |
| 500L 10 | CR65 | 3.5 - 5.5 | 4.5 | 498 | 19.6 | 165 | 6.5 | 120 | 4.7 | 1029 |
| 450L 12 | CR65 | 4.0 - 7.0 | 5 | 540 | 21.3 | 175 | 6.9 | 118 | 4.7 | 968 |
| 450L 13 | CR65 | 3.5 - 7.0 | 5 | 560 | 22.1 | 167 | 6.6 | 115 | 4.5 | 915 |
| 550L 13 | CR65 | 4.0 - 7.0 | 5.5 | 608 | 23.9 | 199 | 7.8 | 128 | 5 | 844 |
| 550L 14 | CR65 | 4.0 - 6.5 | 5.5 | 631 | 24.8 | 198 | 7.8 | 128 | 5 | 812 |
| 450L 15 | CR48 (R6) | 3.5 - 6.0 | 5 | 609 | 24 | 156 | 6.1 | 102 | 4 | 841 |
| 500L 15 | CR65 | 4.0 - 7.0 | 6 | 631 | 24.8 | 187 | 7.4 | 120 | 4.7 | 812 |
| 550L 15 | CR65 | 4.0 - 7.0 | 6.5 | 659 | 25.9 | 204 | 8 | 128 | 5 | 777 |
| 600L 15 | CR65 | 5.0 - 7.5 | 7 | 684 | 26.9 | 224 | 8.8 | 135 | 5.3 | 749 |
| 650L 15 | CR65 | 5.5 - 8.0 | 7.5 | 706 | 27.8 | 239 | 9.4 | 142 | 5.6 | 726 |
| 600L 16 | CR48 (R6) | 5.0 - 7.0 | 6 | 708 | 27.8 | 201 | 7.9 | 122 | 4.8 | 724 |
| 650L 16 | CR48 (R6) | 5.5 - 7.5 | 7 | 729 | 28.7 | 227 | 8.9 | 130 | 5.1 | 703 |
| 'M' SECTION (ALL TUBELESS) | | | | | | | | | | |
| 450M 13 | CR65 | 4.0 - 7.5 | 5.5 | 552 | 21.7 | 172 | 6.7 | 124 | 4.9 | 928 |
| 525M 13 | CR65 | 5.0 - 8.0 | 5.5 | 590 | 23.2 | 210 | 8.3 | 148 | 5.8 | 868 |
| 550M 13 | CR65 | 6.0 - 9.0 | 8 | 602 | 23.7 | 251 | 9.9 | 175 | 6.9 | 851 |
| 550M 14 | CR65 | 5.5 - 8.0 | 7 | 635 | 25 | 228 | 9 | 150 | 5.9 | 805 |
| 500M 15 | CR65 | 5.5 - 8.0 | 7.5 | 648 | 25.5 | 221 | 8.7 | 152 | 6 | 791 |
| 550M 15 | CR65 | 6.0 - 8.5 | 8 | 660 | 26 | 241 | 9.5 | 165 | 6.5 | 776 |
| 600M 15 | CR65 | 7.0 - 9.0 | 8.5 | 686 | 27 | 271 | 10.7 | 178 | 7 | 747 |
| 650M 15 | CR65 | 7.5 - 10.0 | 9 | 711 | 28 | 295 | 11.6 | 203 | 8 | 720 |

| size | pattern | permitted optimum | | diameter | | overall width | | tread width | | revs per mile @ 100mph |
|---------------------------------------|-------------|-------------------|----------------|----------|------|---------------|------|-------------|------|------------------------|
| | | rim width inch | rim width inch | m m | inch | m m | inch | m m | inch | |
| POST HISTORIC (ALL TUBELESS) | | | | | | | | | | |
| 175/550-13 | CR65 | 5.5 - 8.0 | 8 | 555 | 21.9 | 231 | 9.1 | 172 | 6.8 | 923 |
| 475/1000-13 | CR65 | 5.5 - 8.5 | 8 | 593 | 23.3 | 239 | 9.4 | 181 | 7.1 | 864 |
| 475/1150-13 | CR65 | 7.0 - 10.0 | 9 | 578 | 22.8 | 274 | 10.8 | 211 | 8.3 | 886 |
| 600/1200-13 | CR65 | 9.0 - 11.0 | 10 | 640 | 25.2 | 312 | 12.3 | 239 | 9.4 | 800 |
| 600/1350-13 | CR65 | 11.0 - 14.0 | 12 | 635 | 25 | 351 | 13.8 | 274 | 10.8 | 807 |
| 120/590-15 | CR82 | 4.0 - 5.5 | 4.5 | 579 | 22.8 | 161 | 6.3 | 120 | 4.7 | 885 |
| 135/620-15 | CR82 | 4.5 - 6.0 | 4.5 | 617 | 24.3 | 190 | 7.5 | 138 | 5.4 | 830 |
| 475/1000-15 | CR65 | 6.0 - 9.0 | 8 | 627 | 24.7 | 249 | 9.8 | 181 | 7.1 | 817 |
| 430/1160-15 | CR82 | 7.5 - 11.0 | 9.5 | 622 | 23.7 | 287 | 11.3 | 231 | 9.1 | 824 |
| 600/1200-15 | CR65 | 9.0 - 11.0 | 10 | 675 | 26.6 | 314 | 12.4 | 240 | 9.4 | 759 |
| 525/1050-15 | CR65 | 7.5 - 10.0 | 8.5 | 652 | 25.7 | 266 | 10.5 | 207 | 8 | 786 |
| 530/1360-15 | CR82 | 12.0 - 13.0 | 12 | 653 | 25.7 | 345 | 13.6 | 284 | 11.2 | 784 |
| 530/1500-15 | CR82 | 14.0 - 15.5 | 15 | 648 | 25.5 | 406 | 16 | 320 | 12.6 | 791 |
| 530/1600-15 | CR82 | 16.0 - 17.0 | 17 | 648 | 25.5 | 445 | 17.5 | 364 | 14.3 | 791 |
| VINTAGE (TUBES ALSO AVAILABLE) | | | | | | | | | | |
| 450-15 | R5 | 3.0 - 4.5 | 4 | 610 | 24 | 142 | 5.6 | 90 | 3.5 | 840 |
| 500-15 | R5 | 3.0 - 5.0 | 4.5 | 630 | 24.8 | 173 | 6.8 | 96 | 3.8 | 824 |
| 550-15 | R5 | 3.5 - 5.5 | 5 | 655 | 25.8 | 180 | 7.1 | 107 | 4.2 | 768 |
| 600-15 | R5 | 4.0 - 6.0 | 5.5 | 676 | 26.6 | 197 | 7.7 | 116 | 4.6 | 755 |
| 650-15 | R5 | 4.5 - 6.5 | 6 | 696 | 27.4 | 214 | 8.4 | 124 | 4.9 | 746 |
| 550-16* | R5 | 4.5 - 6.0 | 5.5 | 688 | 27.1 | 178 | 7 | 106 | 4.2 | 745 |
| 600-16* | R5 | 4.5 - 6.0 | 5.5 | 708 | 27.9 | 198 | 7.8 | 121 | 4.8 | 723 |
| 650-16* | R5 | 4.5 - 6.5 | 6 | 735 | 28.9 | 201 | 8.3 | 122 | 4.8 | 698 |
| 700-16* | R5 | 5.5 - 7.5 | 7 | 740 | 29.1 | 224 | 8.8 | 125 | 4.9 | 692 |
| 550-17* | R5 | 4.0 - 6.0 | 4 | 713 | 28.1 | 165 | 6.5 | 97 | 3.8 | 718 |
| 700-17* | R5 | 5.0 - 7.0 | 6 | 767 | 30.2 | 210 | 8.3 | 114 | 4.5 | 668 |
| 550, 600-18* | R1 | 4.0 - 6.5 | 4.5 | 765 | 30.1 | 175 | 6.9 | 109 | 4.3 | 670 |
| 700-18* | R1 | 5.0 - 7.0 | 5 | 815 | 32.1 | 224 | 8.8 | 137 | 5.4 | 629 |
| 500-19* | 5 STUD | 3.5 - 5.5 | 4 | 753 | 29.6 | 157 | 6.2 | 93 | 3.7 | 680 |
| 600-19* | 5 STUD | 4.0 - 6.0 | 4.5 | 787 | 31 | 175 | 6.9 | 109 | 4.3 | 651 |
| 650-19* | 5 STUD | 4.0 - 6.0 | 5 | 803 | 31.6 | 198 | 7.8 | 117 | 4.6 | 638 |
| 700-19* | R1 | 4.5 - 6.5 | 5 | 837 | 32.9 | 224 | 8.9 | 130 | 5.1 | 612 |
| 4.50-19* | TRIPLE STUD | 3.5 - 4.5 | 4 | 717 | 28.2 | 140 | 5.5 | 91 | 3.6 | 715 |

* E marked



TRIPLE STUD ROAD RACE



CR65 5 STUD R1 CR82 R5

Correct tyre selection, fitment and maintenance is essential for safety.
Dunlop policy is one of continuing development.
Consequently they reserve the right to change or amend specifications without prior notice.

20 RALLY

From forest to lanes, shale to tarmac, Dunlop rally tyres win stages all over the world.

| size | pattern | permitted optimum | | diameter | | overall width | | tread width | | revs per mile @ 100mph |
|-------------------------------------|---------|-------------------|----------------|----------|------|---------------|------|-------------|------|------------------------|
| | | rim width inch | rim width inch | m m | inch | m m | inch | m m | inch | |
| TARMAC RALLY MOULDED PATTERN | | | | | | | | | | |
| 155/530R13CR311 | | 5.0 - 7.0 | 5.5 | 530 | 20.9 | 166 | 6.5 | 154 | 6 | 967 |
| 185/530R13CR311 | | 6.0 - 8.0 | 7 | 530 | 20.9 | 203 | 8 | 184 | 7.2 | 967 |
| 200/530R13CR311 | | 6.5 - 8.5 | 7.5 | 530 | 20.9 | 216 | 8.5 | 197 | 7.8 | 967 |
| 235/530R13CR311 | | 8.0 - 10.0 | 9 | 530 | 20.9 | 242 | 9.5 | 237 | 9.3 | 967 |
| 175/560R14CR311 | | 5.5 - 7.5 | 6 | 555 | 21.9 | 178 | 7 | 175 | 6.9 | 916 |
| 185/585R15CR311 | | 6.0 - 8.0 | 6.5 | 580 | 22.8 | 191 | 7.5 | 184 | 7.2 | 884 |
| 200/585R15CR311 | | 6.5 - 8.5 | 7.5 | 580 | 22.8 | 211 | 8.3 | 197 | 7.7 | 894 |
| 220/585R15CR311 | | 7.5 - 9.0 | 8 | 580 | 22.8 | 228 | 9 | 217 | 8.5 | 884 |
| 185/625R16CR311 | | 6.0 - 8.0 | 6.5 | 619 | 24.4 | 191 | 7.5 | 179 | 7 | 828 |
| 205/625R16CR311 | | 6.5 - 8.5 | 7.5 | 619 | 24.4 | 215 | 8.5 | 197 | 7.7 | 828 |
| 220/625R16CR311 | | 7.5 - 9.0 | 8 | 619 | 24.4 | 228 | 9 | 213 | 8.4 | 828 |
| 190/650R17CR311 | | 6.0 - 8.0 | 7 | 650 | 25.6 | 203 | 8 | 180 | 7.1 | 788 |
| 220/640R17CR311 | | 7.5 - 9.0 | 8 | 637 | 25.1 | 225 | 8.9 | 220 | 8.7 | 804 |
| 220/645 R18CR311 | | 7.5 - 9.0 | 8 | 643 | 25.3 | 226 | 9 | 220 | 8.7 | 790 |
| TARMAC RALLY HISTORIC | | | | | | | | | | |
| 165/70R10 D93J | | 3.5 - 5.0 | 4.5 | 488 | 19.2 | 175 | 6.9 | 134 | 5.3 | 1100 |
| 165/70R13 D83J | | 4.0 - 5.0 | 4.5 | 564 | 22.2 | 161 | 6.3 | 126 | 5 | 908 |
| 185/70R13 D83J | | 4.5 - 5.5 | 5 | 592 | 23.3 | 189 | 7.4 | 160 | 6.3 | 893 |
| 185/70R15 D83J | | 4.5 - 6.0 | 5.5 | 642 | 25.3 | 191 | 7.5 | 160 | 6.3 | 822 |
| A2 | | | | | | | | | | |
| 195/60-13* | A2 | 5.5 - 6.5 | 5.5 | 553 | 21 | 205 | 8.1 | 165 | 6.5 | 926 |
| 195/60-15* | A2 | 6.0 - 7.0 | 7 | 621 | 24.5 | 227 | 8.9 | 170 | 7.7 | 825 |

* E marked

| size | pattern | permitted optimum | | diameter | | overall width | | tread width | | revs per mile @ 100mph |
|-----------------------------|---------|-------------------|----------------|----------|------|---------------|------|-------------|------|-----------------------------------|
| | | rim width inch | rim width inch | m m | inch | m m | inch | m m | inch | |
| FOREST RALLY DZ86R | | | | | | | | | | |
| 185/65R15 DZ86R L/R | | 5.0 - 6.0 | 5.5 | 632 | 24.9 | 195 | 7.7 | 156 | 6.1 | 812 |
| 195/65R15 DZ86RW L/R | | 5.5 - 7.0 | 6 | 648 | 25.5 | 210 | 8.4 | 164 | 6.5 | 789 |
| 205/65R15 DZ86RW L/R | | 5.5 - 7.5 | 6 | 648 | 25.5 | 212 | 8.3 | 172 | 6.8 | 789 |
| FOREST RALLY SP85 | | | | | | | | | | |
| 165/65R13 SP85 | | 4.5 - 5.5 | 5 | 548 | 21.6 | 170 | 6.7 | 140 | 5.5 | 979 |
| 165/80R13 SP85 | | 4.5 - 6.0 | 4.5 | 600 | 23.6 | 170 | 6.7 | 140 | 5.5 | 853 |
| 185/70R13 SP85 | | 5.0 - 6.0 | 5.5 | 600 | 23.6 | 190 | 7.5 | 156 | 6.1 | 853 |
| 175/65R14 SP85 | | 5.0 - 6.0 | 5.5 | 594 | 23.4 | 184 | 7.2 | 150 | 5.9 | 891 |
| 185/60R15 SP85 | | 5.0 - 6.5 | 6 | 606 | 23.9 | 195 | 7.7 | 158 | 6.2 | 874 |
| FOREST RALLY SP61/82 | | | | | | | | | | |
| 165/80R13 SP61 | | 4.5 - 6.0 | 4.5 | 600 | 23.6 | 170 | 5.5 | 140 | 5.5 | 853 |
| 185/70R13 SP82/61 | | 5.0 - 6.0 | 5.5 | 600 | 23.6 | 190 | 7.5 | 156 | 6.1 | 853 |
| 195/70R13 SP82 | | 5.5 - 6.5 | 6 | 608 | 24 | 200 | 7.9 | 165 | 6.5 | 842 |
| 175/70R15 SP82 | | 5.0 - 6.0 | 5 | 635 | 25 | 173 | 6.8 | 146 | 5.8 | 806 |
| 185/70R15 SP82/61 | | 5.0 - 6.0 | 5.5 | 656 | 25.9 | 190 | 7.5 | 156 | 6.1 | 781 |
| 195/70R15 SP82 | | 6.0 - 7.5 | | | | | | | | NEW FOR 2007 DATA TO BE CONFIRMED |

| TARMAC RALLY COMPOUNDS | |
|------------------------|--------|
| X04 | HARD |
| X08 | MEDIUM |
| X12 | SOFT |
| X22 | WET |

| FOREST RALLY COMPOUNDS | |
|------------------------|-------------|
| 5 | MEDIUM/HARD |
| 6 | MEDIUM |
| 7 | STANDARD |
| 75/8 | SOFT |



Correct tyre selection, fitment and maintenance is essential for safety.
 Dunlop policy is one of continuing development.
 Consequently they reserve the right to change or amend specifications without prior notice.

22 TRACK DAY

The very latest technology in road legal tyres that offer outstanding grip and safety in a controlled race environment. Fantastic track day experiences ...from Ferrari to Fiesta.

| size | pattern | permitted optimum | | diameter | | overall width | | tread width | | revs per mile @ |
|--------------------------|---------|-------------------|----------------|----------|------|---------------|------|-------------|------|-----------------|
| | | rim width inch | rim width inch | m | inch | m | inch | m | inch | |
| 100mph | | | | | | | | | | |
| ROAD LEGAL SALOON | | | | | | | | | | |
| D93J | | | | | | | | | | |
| 165/70R10 | D93J | 3.5 - 5.0 | 4.5 | 488 | 19.2 | 175 | 6.9 | 134 | 5.3 | 1100 |
| D98J | | | | | | | | | | |
| 175/60R13 | D98J | 5.0 - 6.0 | 5 | 540 | 21.3 | 175 | 6.9 | 160 | 6.3 | 982 |
| D01J | | | | | | | | | | |
| 165/55R12 | D01J | 4.5 - 6.0 | 5 | 488 | 19.2 | 172 | 6.8 | 148 | 5.8 | 1094 |
| 195/60R14 | D01J | 5.5 - 7.0 | 6 | 586 | 23.1 | 205 | 8.1 | 196 | 7.7 | 905 |
| 225/50R15 | D01J | 6.0 - 8.0 | 7 | 603 | 23.7 | 225 | 8.9 | 222 | 8.7 | 875 |
| 265/40ZR17 | D01J | 9.0 - 10.5 | 9.5 | 644 | 25.4 | 275 | 10.8 | 258 | 10.2 | 824 |
| D83J | | | | | | | | | | |
| 165/70R13 | D83J | 4.0 - 5.0 | 4.5 | 564 | 22.2 | 161 | 6.3 | 126 | 5 | 908 |
| 185/70R13 | D83J | 4.5 - 5.5 | 5 | 592 | 23.3 | 189 | 7.4 | 160 | 6.3 | 893 |
| 185/70R15 | D83J | 4.5 - 6.0 | 5.5 | 642 | 25.3 | 191 | 7.5 | 160 | 6.3 | 822 |
| D84J | | | | | | | | | | |
| 185/60R13 | D84J | 5.0 - 6.0 | 5.5 | 548 | 21.6 | 186 | 7.3 | 160 | 6.3 | 947 |
| 215/50R13 | D84J | 6.5 - 7.5 | 7 | 548 | 21.6 | 224 | 8.8 | 191 | 7.5 | 947 |
| 185/60R14 | D84J | 5.0 - 6.0 | 5.5 | 574 | 22.6 | 186 | 7.3 | 160 | 6.3 | 921 |
| 195/60R14 | D84J | 5.5 - 6.5 | 6 | 588 | 23.2 | 206 | 8.1 | 168 | 6.6 | 898 |
| 205/60R15 | D84J | 5.5 - 6.5 | 6 | 626 | 24.7 | 212 | 8.4 | 176 | 6.9 | 843 |
| 225/55R15 | D84J | 6.5 - 7.5 | 7 | 626 | 24.7 | 239 | 9.4 | 201 | 7.9 | 843 |
| DZ02G | | | | | | | | | | |
| 185/55R14 | DZ02G | 5.0 - 6.5 | 5.5 | 560 | 22.1 | 185 | 7.3 | 175 | 6.9 | 947 |
| 195/55R15 | DZ02G | 5.5 - 7.0 | 6 | 592 | 23.3 | 199 | 7.9 | 196 | 7.7 | 891 |
| 205/50R15 | DZ02G | 5.5 - 7.5 | 6.5 | 585 | 23.1 | 208 | 8.2 | 206 | 8.1 | 902 |
| 205/55R16 | DZ02G | 5.5 - 7.5 | 6.5 | 632 | 24.9 | 211 | 8.3 | 206 | 8.1 | 835 |
| 225/45ZR16 | DZ02G | 7.0 - 8.5 | 7.5 | 607 | 23.9 | 224 | 9.1 | 222 | 8.7 | 869 |
| 215/45ZR17 | DZ02G | 7.0 - 8.0 | 7 | 629 | 24.7 | 212 | 8.6 | 210 | 8.3 | 839 |
| 225/45R17 | DZ02G | 7.0 - 8.5 | 7.5 | 634 | 25 | 225 | 8.9 | 223 | 8.8 | 832 |
| 235/45ZR17 | DZ02G | 7.5 - 9.0 | 8 | 644 | 25.4 | 234 | 9.5 | 232 | 9.1 | 824 |
| 245/45R17 | DZ02G | 7.5 - 9.0 | 8 | 650 | 25.6 | 248 | 9.8 | 242 | 9.5 | 812 |
| 235/40ZR18 | DZ02G | 8.0 - 9.5 | 8.5 | 643 | 25.3 | 247 | 9.7 | 226 | 8.9 | 821 |
| 265/35ZR18 | DZ02G | 9.0 - 10.5 | 9.5 | 643 | 25.4 | 270 | 10.6 | 258 | 10.2 | 821 |



KART

Dunlop supplies tyres to many of the world's karting classes. These high performance tyres are made in Japan and available from Anderson Karts.

| tread size | pattern | tread compound | | | | permitted | | optimum | | overall | | overall | | | |
|---------------|---------|----------------|-----|-----|---|-----------|-----|-----------|-----------|----------|-------|---------|-------|-----|-----|
| | | RAC | ABK | CIK | | RAC | RAC | rim width | rim width | diameter | width | width | width | | |
| 10 x 3.60-5 | SLICK | • | | | | | | 3.5-5.0 | 4 | 252 | 9.9 | 117 | 4.6 | 73 | 2.9 |
| 10 x 4.50-5 | SLICK | • | • | • | • | | | 4.0-5.5 | 4.5 | 255 | 10 | 133 | 5.2 | 86 | 3.4 |
| 10 x 4.50-5 | SLICK | | | • | • | | | 4.0-5.5 | 4.5 | 259 | 10.2 | 128 | 5 | 105 | 4.1 |
| 11 x 5.50-6 | SLICK | | | • | • | | | 4.0-6.0 | 6 | 275 | 10.8 | 162 | 6.4 | 115 | 4.5 |
| | | | | | | | | | | | | | | | |
| 11 x 5.00-5 | SLICK | • | | | | | | 4.0-5.0 | 4.5 | 277 | 10.9 | 143 | 5.6 | 104 | 4.1 |
| 11 x 6.50-5 | SLICK | | | • | • | | | 6.0-8.0 | 6.5 | 280 | 11 | 180 | 7.1 | 124 | 4.9 |
| 11 x 7.10-5 | SLICK | • | • | • | | | | 7.0-8.5 | 8 | 278 | 10.9 | 210 | 8.3 | 136 | 5.4 |
| 11 x 7.10-5 | SLICK | | | • | • | | | 7.0-8.5 | 8 | 279 | 11 | 209 | 8.2 | 160 | 6.3 |
| 11.5 x 8.00-6 | SLICK | | | • | • | | | 7.0-9.0 | 9 | 286 | 11.3 | 234 | 9.3 | 165 | 6.5 |
| | | | | | | | | | | | | | | | |
| 10 x 3.60-5 | KT3 | | | | | | • | 3.5-5.0 | 4 | 258 | 10.2 | 120 | 4.7 | 78 | 3.1 |
| 10 x 4.50-5 | KT8 | | | | | | • | 4.0-5.5 | 4.5 | 260 | 10.2 | 128 | 5 | 105 | 4.1 |
| 11 x 5.00-6 | KT6 | | | | | | • | 4.0-5.0 | 4.5 | 278 | 10.9 | 130 | 5.1 | 93 | 3.7 |
| | | | | | | | | | | | | | | | |
| 11 x 4.50-5 | KT3 | | | | | | • | 4.0-5.0 | 4.5 | 280 | 11 | 138 | 5.4 | 94 | 3.7 |
| 11 x 6.00-5 | KT3 | | | | | | • | 5.0-7.0 | 6 | 284 | 11.2 | 166 | 6.5 | 116 | 4.6 |
| 11 x 6.50-5 | KT8 | | | | | | • | 6.0-8.0 | 6.5 | 278 | 10.9 | 180 | 7.1 | 122 | 4.8 |
| 11.5 x 7.10-6 | KT6 | | | | | | • | 7.0-8.5 | 8 | 288 | 11.3 | 208 | 8.2 | 147 | 5.8 |



KT6



KT8



SL02



KT3



Correct tyre selection, fitment and maintenance is essential for safety.
Dunlop policy is one of continuing development.
Consequently they reserve the right to change or amend specifications without prior notice.

Genuine, cutting edge technology for a modern world ...across every discipline. Moto GP, Superbike, Supersport, International, National, Club or Classic.

| size | pattern | ideal | permitted | inflation | width | | diameter | |
|-------------------------------------|---------|-------------|-------------|--------------------------------|-------|------|----------|-------|
| | | rim inch | rim inch | pressure bar | m m | inch | m m | inch |
| ROAD LEGAL | | | | | | | | |
| 110/70ZR17 | D209GP | 3 | 3.00 - 3.50 | 1.6 - 2.1 | 113 | 4.45 | 586 | 23.07 |
| 120/70ZR17 | D209GP | 3.5 | 3.5 | 1.9 - 2.3 | 117 | 4.61 | 603 | 23.74 |
| 150/60ZR17 | D209GP | 4 | 4.00 - 5.00 | 1.8 - 2.0 | 146 | 5.75 | 622 | 24.49 |
| 160/60ZR17 | D209GP | 4.5 | 4.00 - 5.00 | 1.9 - 2.3 | 164 | 6.46 | 632 | 24.88 |
| 180/55ZR17 | D209GP | 5.5 | 5.50 - 6.00 | 1.8 - 2.3 | 182 | 7.17 | 643 | 25.31 |
| 190/60ZR17 | D209GP | 6 | 5.50 - 6.00 | 1.8 - 2.3 | 186 | 7.33 | 656 | 25.83 |
| SUPERBIKE - 16.50" | | | | | | | | |
| SLICKS | | | | | | | | |
| 125/80R420 | KR106 | 3.5 | 3.30 - 3.75 | 1.9 - 2.3 | 119 | 4.69 | 605 | 23.82 |
| 200/70R420 | KR108 | 6.25 | 6.00 - 6.25 | please contact Dunlop for data | | | | |
| INTERMEDIATES - slicks cut to order | | | | | | | | |
| WETS | | | | | | | | |
| 125/80R420 | KR189 | 3.5 | 3.30 - 3.75 | 2.1 - 2.35 | 119 | 4.69 | 605 | 23.82 |
| 195/80R420 | KR392 | 6 | 5.50 - 6.25 | 2.0 - 2.3 | 193 | 7.6 | 651 | 25.63 |
| 125CC | | | | | | | | |
| SLICKS | | | | | | | | |
| 95/70R17 | KR149 | 2.5 | 2.25 - 2.50 | 1.7 - 1.8 | 88 | 3.47 | 576 | 22.68 |
| 115/70R17 | KR133 | 3.5 | 3.5 | 1.9 - 2.0 | 116 | 4.57 | 600 | 23.62 |
| INTERMEDIATES | | | | | | | | |
| 85/80R17 | KR364 | 2.15 | 2.15 - 2.50 | 1.6 - 1.8 | 85 | 3.35 | 570 | 22.44 |
| 115/50R17 | KR364 | 3.5 | 3.00 - 3.50 | 1.8 - 2.0 | 113 | 4.45 | 585 | 23.03 |
| WETS | | | | | | | | |
| 95/70R17 | KR189 | 2.5 | 2.25 - 2.50 | 2 | 90 | 3.54 | 580 | 22.83 |
| 115/70R17 | KR389 | 3.5 | 3.5 | 2.1 | 115 | 4.53 | 593 | 23.35 |
| CLASSIC | | | | | | | | |
| 275/375-18F/RKR825 | | 2.15 | 1.85 - 2.15 | 1.6 - 1.8 | 95 | 3.74 | 600 | 23.62 |
| 350/325-18/FKR124A | | 2.5 | 2.5 | 2.0 - 2.3 | 110 | 4.33 | 634 | 24.96 |
| 350-18F/R | KR124 | 2.15 | 2.15 - 2.50 | 2.2 | 102 | 4.02 | 638 | 25.12 |
| 375/500-18/R | KR164 | 3 | 3 | 2.2 - 2.3 | 135 | 5.32 | 643 | 25.31 |
| 300-19/F | KR76 | 1.85 | 1.85 | 1.8 - 2.0 | 93 | 3.66 | 657 | 25.87 |
| 350-19/R | KR73 | 2.15 | 2.15 | 1.8 - 2.0 | 106 | 4.17 | 678 | 26.69 |
| SIDECAR | | | | | | | | |
| 500L 10 | CR65 | 4.5 | 3.50 - 5.50 | 2.1 - 3.0 | 165 | 6.5 | 498 | 19.61 |
| 500L 10 | CR70 | 4.5 | 3.50 - 5.50 | 2.1 - 3.0 | 165 | 6.5 | 498 | 19.61 |
| 350-16 | RS2 | 2.63 | 2.63 | 1.8 | 107 | 4.21 | 618 | 24.33 |

| size | pattern | ideal | permitted | inflation | width | | diameter | |
|------------------------------------|---------|-------------|-------------|--------------------------------|-------|------|----------|-------|
| | | rim inch | rim inch | pressure bar | m m | inch | m m | inch |
| 600CC SUPERSPORT/SUPERSTOCK | | | | | | | | |
| DRY | | | | | | | | |
| 120/70ZR17 | D209GP | 3.5 | 3.5 | 1.9 - 2.3 | 117 | 4.61 | 603 | 23.74 |
| 180/55ZR17 | D209GP | 5.5 | 5.50 - 6.00 | 1.8 - 2.3 | 182 | 7.17 | 643 | 25.31 |
| 190/55ZR17 | D209GP | 5.5 | 5.50 - 6.00 | please contact Dunlop for data | | | | |
| 190/60ZR17 | D209GP | 6 | 5.50 - 6.00 | 1.8 - 2.3 | 186 | 7.33 | 656 | 25.83 |
| WETS | | | | | | | | |
| 120/70R17 | KR189 | 3.5 | 3.50 - 3.75 | 2.1 - 2.35 | 117 | 4.61 | 603 | 23.74 |
| 165/50R17* | KR388 | 5.5 | 5.00 - 5.50 | 2.0 - 2.3 | 163 | 6.42 | 623 | 24.53 |
| 195/70R17 | KR390 | 6 | 6.00 - 6.25 | 2.0 - 2.3 | 185 | 7.29 | 656 | 25.83 |
| SUPERBIKE - 17" | | | | | | | | |
| SLICKS | | | | | | | | |
| 120/70R17 | KR106 | 3.5 | 3.50 - 3.75 | 1.9 - 2.3 | 116 | 4.51 | 603 | 23.74 |
| 125/80R17 | KR106 | 3.5 | 3.50 - 3.75 | 1.9 - 2.3 | 125 | 4.92 | 604 | 23.78 |
| 195/65R17 | KR108 | 6 | 5.50 - 6.25 | 1.8 - 2.1 | 185 | 7.28 | 656 | 25.83 |
| 195/70R17 | KR108 | 6 | 5.50 - 6.25 | 1.8 - 2.1 | 185 | 7.28 | 656 | 25.83 |
| INTERMEDIATES | | | | | | | | |
| 125/80R17 | KR394 | 3.5 | 3.50 - 3.75 | 1.9 - 2.3 | 125 | 4.92 | 604 | 23.78 |
| 195/70R17 | KR395 | 6 | 5.50 - 6.25 | 1.8 - 2.1 | 185 | 7.28 | 656 | 25.83 |
| WETS | | | | | | | | |
| 120/70R17 | KR189 | 3.5 | 3.50 - 3.75 | 2.1 - 2.3 | 117 | 4.61 | 603 | 23.74 |
| 195/70R17 | KR390 | 6 | 5.50 - 6.25 | 2.0 - 2.3 | 185 | 7.28 | 656 | 25.83 |
| SUPER MOTARD AND 250 GP | | | | | | | | |
| SLICKS | | | | | | | | |
| 120/70R17 | KR106 | 3.5 | 3.50 - 3.75 | 1.9 - 2.3 | 116 | 4.51 | 603 | 23.74 |
| 155/60R17 | KR108 | 4.5 | 4.00 - 5.00 | 1.8 - 2.1 | 153 | 6.02 | 622 | 24.49 |
| 165/55R17 | KR108 | 5.5 | 5.25 - 5.50 | 1.8 - 2.1 | 163 | 6.41 | 628 | 24.72 |
| 170/55R17 | KR108 | 5.5 | 5.00 - 5.50 | 1.5 - 2.0 | 163 | 6.41 | 632 | 24.88 |
| INTERMEDIATES | | | | | | | | |
| 120/70R17 | KR364 | 3.5 | 3.50 - 3.75 | 1.9 - 2.3 | 119 | 4.69 | 596 | 23.46 |
| 160/55R17 | KR364 | 5 | 5.00 - 5.50 | 1.8 - 2.1 | 162 | 6.38 | 627 | 24.69 |
| WETS | | | | | | | | |
| 120/70R17 | KR189 | 3.5 | 3.50 - 3.75 | 2.1 - 2.35 | 117 | 4.61 | 603 | 23.74 |
| 165/50R17 | KR244 | 5.5 | 5.00 - 5.50 | 2.1 - 2.3 | 163 | 6.42 | 623 | 24.53 |
| CLUB RACING | | | | | | | | |
| 85/80R17 | KR364 | 2.15 | 2.15 - 2.50 | 1.6 - 1.8 | 85 | 3.35 | 570 | 22.44 |
| 105/70R17 | KR364 | 3 | 3 | 1.8 - 2.0 | 106 | 4.17 | 585 | 23.03 |
| 115/50R17 | KR364 | 3.5 | 3.00 - 3.50 | 1.8 - 2.0 | 113 | 4.45 | 585 | 23.03 |
| 120/70R17 | KR364 | 3.5 | 3.50 - 3.75 | 1.9 - 2.3 | 119 | 4.69 | 596 | 23.46 |
| 160/55R17 | KR364 | 5 | 5.00 - 5.50 | 1.8 - 2.1 | 162 | 6.38 | 627 | 24.69 |

*600cc only

Correct tyre selection, fitment and maintenance is essential for safety.
Dunlop policy is one of continuing development.
Consequently they reserve the right to change or amend specifications without prior notice.



KR825 KR124 KR124A KR164 KR189 KR388 KR244 KR390 D209 GP KR364 RS2

26 >>> WORLDWIDE STOCKISTS

ALBANIA SAVA TIRES D.O.O. Skofjeloska C.6 4000 Kranj Slovenia

contact: Tomaz Lanisek
tel: +386 4 207 70 37
fax: +386 4 207 75 15
email: tomaz.lanisek
@goodyear.com

AUSTRALIA DUNLOP MOTORSPORT Locked Bag 6009 Richmond Victoria 3121 Australia

contact: Owen Hughes
tel: +61 38 416 7436
fax: +61 38 416 7400
email: owen_hughes
@goodyear.com

motor cycle
contact: Aaron Jones
email: aaron_jones
@goodyear.com

AUSTRIA GOODYEAR DUNLOP TIRES AUSTRIA GMBH Richard Strasse Str. 19 1230 Wien Austria

motor cycle
contact: Anton Weinzetl
tel: 0043 1 614 04 400
fax: 0043 1 614 04 455
email: anton.weinzetl
@goodyear.com

car
contact: Christian Schneider
tel: 0043 1 614 04 400
fax: 0043 1 614 04 455
email: christian_schneider
@goodyear.com

BALTIC STATES RTR AUTODAS OU Kadaka Tee 5 10621 Tallinn Estonia

contact: Kylliki Nirk
tel/fax: +372 6267 869
email: dunlop@hot.ee

BELGIUM GOODYEAR DUNLOP TIRES BELGIUM N.V. Kernenergiestraat 60 2610 Wilrijk Belgium

contact: Nicolas Uyttenhove
tel: +32 (0) 3 820 3211
fax: +32 (0) 3 820 3344
web: www.dunlop-tires.be

BOSNIA SAVA TIRES D.O.O. Skofjeloska C.6 4000 Kranj Slovenia

contact: Tomaz Lanisek
tel: +386 4 207 70 37
fax: +386 4 207 75 15
email: tomaz.lanisek
@goodyear.com

CANADA

North american car race distributor (including usa)/vintage motorcycle canada only.

Also refer to **USA** listing.

VINTAGE TYRES LIMITED 255 Southwest Cove Road Rr#1, Hubbards Nova Scotia Canada, B0J 1T0

contact: Phil Lamont
tel: +1 902 228-2335
fax: +1 902 228-2241
email: vintyre@aol.com

CROATIA SAVA TIRES D.O.O. Skofjeloska C.6 4000 Kranj Slovenia

contact: Tomaz Lanisek
tel: +386 4 207 70 37
fax: +386 4 207 75 15
email: tomaz.lanisek
@goodyear.com

CYPRUS dealer MICHAELS AUTOMOTIVE LTD 1 Markou Drakou St PO Box 24525 1300 Nicosia Cyprus

contact: Charlie Eftychiou
tel: +357 2 2355064
fax: +357 2 2354182

CZECH REPUBLIC GOODYEAR DUNLOP TIRES CZECH Vyskocilova 1422/119 14000 Praha 4 Czech Republic

contact: Bohdan Krejci
tel: +42 0 24109 0513
fax: +42 0 24109 0500
mobile: +42 0 602 253626
email: bohdan_krejci
@goodyear.com

dealer MICHL MOTORSPORT Tyrsova 204 Cz-664 34 Kurim Czech Republic

contact: Josef Michl
tel: +420 54123 1212
fax: +420 54123 1216
email: info
@michl-motorsport.cz

DENMARK JAN O MOTORSPORT Pilevangsvej 2 Baaring Vig 5466 Asperup Denmark

contact: Jan O Petersen
tel: +45 6448 1099
mobile: +45 4013 4066
fax: +45 6448 1403
email: j@jano1.dk

DUBAI see UNITED ARAB EMIRATES

ESTONIA see BALTIC STATES

FRANCE RACING MOTORSPORT 3 Rue du Parin 63360 Gerzat France

motorcycle
contact: Mme Albert
tel: +33 4732 46000
mobile: +33 6894 95961
fax: +33 4732 30395
email: inforacing.motorsport
@wanadoo.fr

car dealer
ORECA
Rue de Rome
Zi de Signes
83870 Signes
contact: Patrice Zurro
tel: 0033 494 885741
fax: 0033 494 328001
email: pzurro@oreca.fr
web: www.oreca.fr

FINLAND GOODYEAR DUNLOP TYRES FINLAND OY Lampputie 2 00740 Helsinki Finland

contact: Juha Hietamies
mobile: 00358 4008 00092
fax: 00358 9615 25301
email: juha.hietamies
@goodyear.com

car dealer **PENTEP OY** Eino Leinon Katu 30 Sf - 13130 Hameenlinna Finland

contact: Teppo Vekka
tel: +358 3616 9460
fax: +358 3616 6222
email: teppo.vekka
@rengas-vekka.fi

FYR MACEDONIA SAVA TIRES D.O.O. Skofjeloska C.6 4000 Kranj Slovenia

contact: Tomaz Lanisek
tel: +386 4 207 70 37
fax: +386 4 207 75 15

GERMANY DUNLOP GMBH & CO.KG Dunlopstrasse 2 Postfach 2251 63450 Hanau Germany

car
contact: Dirk Schuster
tel: +49 6181 681842
fax: +49 6181 681284
email: dirk_schuster
@dunlop.de

kart
contact: Michael Bellmann
tel: +49 6181 681815
fax: +49 6181 681284
mobile: +49 1607 072253
email: michael.bellmann
@dunlop.de

motorcycle
contact: Ralph Christmann
tel: +49 6181 681535
fax: +49 6181 681284
email: ralph_christmann
@dunlop.de

GREECE - ATHENS GOODYEAR DUNLOP Katsoni Avenuet Ipirou 69 13562 AG. Anargiri Athens Greece

contact: Dimitris Dimitropoulos
tel: +30 210 264 0400
fax: +30 210 264 0422

GREECE - THESSALONIKI GOODYEAR DUNLOP TIRES HELLAS SAIC 26th October Str 90 Porto Center 54627 Palia Sfagia Thessaloniki Greece

contact: Litsa Zapriou
John Tsolakis
Matina Tsolaki
tel: +30 231 054 5791
fax: +30 231 054 0589

HOLLAND GOODYEAR DUNLOP TIRES NEDERLAND BV Merwedeweg 4C 3621 Ir breukelen Holland

contact: Ed van Proosdij
tel: +31 346 259269
fax: +31 346 252450
email: ed_vanproosdij
@goodyear.com

dealer **MUSKO RACING** Industrieweg 1 3762 EG Soest Holland

contact: Cees Kamphorst
tel: +31 35 601 3335
fax: +31 35 601 3355

HUNGARY GOODYEAR DUNLOP TYRES Infopark Setany 1 1EP.3.em H1117 Budapest Hungary

contact: Imre Gaal
tel: +361 382 3924
fax: +362 04663 255

Hungarian Race/Rally Distributor **BOTKA TEAM** Szallito ut 7, H - 1211 Budapest Hungary

contact: E Botka
tel: +36 1283 0801

IRELAND GOODYEAR DUNLOP TYRES IRELAND LTD Unit 20 Fonthill Industrial Park Clondalkin, Dublin 22 Ireland

contact: Richard Warbrick
Jennifer Coe
tel: +353 16238500
fax: +353 16238585
email: richard_warbrick
@goodyear.com

28 >>> WORLDWIDE STOCKISTS

ITALY

**GOODYEAR DUNLOP TIRES
ITALIA S.P.A.**
Centro Direzionale Milanofiori
Strada 4 Palazzo A/10
20090 Assago (Milano)
Italy

contact: Aldo Ciccone
tel: +39 335 123 1321
fax: +39 02892 69044
email: aldo_ciccone
@goodyear.com

JAPAN

**SUMITOMO RUBBER
INDUSTRIES LTD**
1-1, 21-Chome,
Tsutsui-Cho
Chou-Ku
Kobe 651-0071
Japan

tel: +81 78 265 5622
fax: +81 78 265 5652

LATVIA

see BALTIC STATES

LITHUANIA

see BALTIC STATES

MALTA

JOHN BULL GARAGE
48 St Publius Street
St Pauls Bay
SPB 09
Malta GC

contact: J M Anastasi
tel: +356 571025 (office)
fax: +356 577678
mobile: +356 949 3434 (2 lines)
email: johnbull@global.net.mt

NEW ZEALAND

**SOUTH PACIFIC TYRES NZ
LIMITED**
Dunlop Motorsports
PO Box 2437
Wellington
New Zealand

contact: Alastair Corbett
tel: +64 4474 2481
fax: +64 4473 8164
email: alastair_corbet
@sptyres.co.nz

NORWAY

OLA SVENDSEN MOTORSPORT
Evjelokka 2
1662 Rolvsøy Fredrikstad
Norway

contact: Ola Svendsen
tel: +47 6994 9400
fax: +47 6994 9401
email: olasmm@online.no

POLAND

GOODYEAR DUNLOP POLAND
Centrum Logistyczne
Ul. Szklana 31
33-100 Tarnow
Poland

contact: Adam Baranowski
tel: +48 1463 26026
fax: +48 1463 26124
email: adam.baranowski
@goodyear.com

RUSSIA

AKKC FOR WENDEX LLC
Donskoy 2nd Proezd 10
Moscow 117071
Russia

contact: Yuri Kim
tel: +7 95 955 1702
fax: +7 95 954 7043

SERBIA & MONTENEGRO

SAVA TIRES D.O.O.
Skofjeloska C.6
4000 Kranj
Slovenia

contact: Tomaz Lanisek
tel: +386 4 207 70 37
fax: +386 4 207 75 15

SLOVAKIA

refer to: DUNLOP
MOTORSPORT UK

SLOVENIA

SAVA TIRES D.O.O.
Skofjeloska C.6
4000 Kranj
Slovenia

contact: Tomaz Lanisek
tel: +386 4 207 70 37
fax: +386 4 207 75 15
email: tomaz_lanisek
@goodyear.com

SOUTH AFRICA

**ATS MOTORSPORT AND
PERFORMANCE**
30 Schoongezicht Road
Bergbron
Johannesburg
South Africa

contact: Richard Leeke
Robin Houghton
tel: +27 11 670 8400
fax: +27 11 673 5185
email: atsleeke@global.co.za

SPAIN

GOODYEAR TIRES ESPANA SA
San Severo 26
28 Edificio A2 20
28042 Barajas
Madrid
Spain

contact: Ignacio Moran
tel: +34 91746 1765
fax: +34 91329 0353

motorcycle

contact: Jose Luis Sebastian
tel: +34 90211 3322
fax: +34 91329 1753

car distributor

KERNEL S. L.
Napoles, 98 Bajos
08013 Barcelona
Spain

contact: Ernest Serrat
tel: +34 9024 00010
fax: +34 9323 29323
mobile: +34 6297 89760
email: info@kernelco.com

motorcycle distributor

ZACATIN. SA
C/Alcorcon N 13
28850 Torrejon de Ardoz
Madrid
Spain

contact: Modesto Munoz
tel: +34 916775451
+34 916777897
fax: +34 916776123
email: modestom@zacatin.es

SWEDEN

TL RACING AB
Hagagatan 2
60215 Norrkoping
Sweden

contact: Thomas Lindstrom
tel: +46 11 167060
fax: +46 11 167004
email: thomas.tlr@telia.com

SWITZERLAND

**GOODYEAR DUNLOP TIRES SUISSE
SA**
Industriestrasse 21
8604 Hegnau
Switzerland

contact: Reto Camastral
tel: +41 1947 86 60
fax: +41 1947 86 61
email: reto_camastral
@goodyear.com

car distributor

HORAG HOTZ RACING AG
Kreuzlingerstrasse 3
8583 Sulgen
Switzerland

contact: Markus Hotz
tel: 0041 71 6448020
fax: 0041 71 6448030
email: horag@bluewin.ch

TURKEY

GOODYEAR LASTIKLERI TAS
Buyukdere Caddesi
Maslak Is Merkezi No 4
Maslak 80670
Istanbul
Turkey

contact: Y. Cem Yildiran
Ms. Demet Tunc
tel: +212 329 5000
fax: +212 276 6225
email: cem_yildiran
@dunloptyres.com

UNITED ARAB EMIRATES

GOODYEAR DUNLOP TIRES
PO. Box 33528
Dubai
United Arab Emirates

contact: Chris Keogh
tel: +971 4 3329970
fax: +971 4 3311245
email: chris_keogh@goodyear.com

UNITED KINGDOM

MOTORSPORT DIVISION
Dunlop Tyres Ltd
Fort Dunlop
Birmingham
B24 9QT

contact:
tel: +44 (0) 121 306 6000
fax: +44 (0) 121 306 7000
email: motorsport
@dunloptyres.com

race dealer

HP TYRES LTD
Units 5 & 6 Broad March Trade Park
Long March Industrial Estate
Davenport
Northants NN11 4HE

contact: John Pearson/Steve Cox
tel: +44 (0)1327 301887
fax: +44 (0)1327 301891
email: hptyres@btconnect.com

kart distributor

ANDERSON CSK MOTORSPORT
Units 2 & 3, Sterling Industrial
Estate,
Carwood Road, Castleford,
West Yorkshire.
WF10 4PS

contact: Russell Anderson
tel: +44 (0) 1977 603838
fax: +44 (0) 1977 603839
email: enquiries@
anderson-csk.co.uk

rally distributor

MR TYRE MOTORSPORT
Unit B
33 Pitsford Street
Hockley
Birmingham
B18 6LJ

contact: Daniel Jeffs
tel: +44 (0) 121 551 2131
fax: +44 (0) 121 551 2133
www. mrtyremotorsport.co.uk

post historic & vintage distributor

VINTAGE TYRE SUPPLIES LTD
The National Motor Museum
Beaulieu
Hampshire
SO42 7ZN

contact: Chris Marchant/Andy Vine
tel: +44 (0) 1590 612261
fax: +44 (0) 1590 612722
email: sales@vintage tyres.com

U.S.A.

motorcycle
**GOODYEAR DUNLOP TIRE
NORTH AMERICA LTD**
Po Box 1109
Buffalo
New York 14240
USA

contact: Jim Allen
tel: +1 716 693 2595
fax: +1 716 695 7418
email: jallen@dunloptire.com

car distributor

ROGER KRAUS TIRES
2896 Grove Way
Castro Valley
California CA 64546
USA

contact: Roger Kraus
tel: +1 510 582 5031
fax: +1 510 886 5605
email: dunvinrep1@yahoo.com

SASCO SPORTS INC
1071B Raceplex Drive
Alton
VA 24520
USA

contact: Dave Handy
tel: +1 434 822 7200
fax: +1 434 822 7300
email: info@sascosports.com

also refer to Canada listing